

## Acute Oncology- challenges and opportunities: Speaker Biographies

Friday 10 November 2023

### Naomi Clatworthy



Naomi currently works as an Acute Oncology Nurse Consultant at the Royal Devon University Healthcare NHS Foundation Trust, leading the AO team on their Northern Site. Naomi has worked within a variety of ward and outpatient cancer care settings. She relocated to North Devon in 2015 to help establish the Acute Oncology Service. This nurse led service now runs over 7 days and has been nationally recognised for its innovative nurse led approach. Naomi is a UKONS board member, UKAOS Board member and a Specialist Advisor for the CQC. Raising the profile of Acute Oncology is a real passion for Naomi, she is also particularly focused in the development of advanced practice within nursing roles recognising how they enhance the quality of the service provided.

### Dr Tim Cooksley



Tim is a Consultant in Acute Medicine at Manchester University Foundation Trust and Honorary Consultant at The Christie. He is honorary senior lecturer at the University of Manchester.

Tim is immediate past President of the Society for Acute Medicine (SAM) and a member of Royal College of Physicians council. He is also on the board of the UK acute oncology society. Tim recently co-chaired the acute care workstream of the 10-year NHS England UEC strategy and sits on the NHS England UEC expert review group.

Tim co-chairs the Multinational Association for Supportive Care in Cancer (MASCC) neutropenia, myelosuppression and infection group. He co-chaired the MASCC immune checkpoint inhibitor toxicity group and co-authored their international management guidelines. Tim co-led the NHS England guidance on the ambulatory management of low-risk febrile neutropenia and was on the development group for the UKONS guidelines for acute cancer presentations.

### Dr Jenny Cotton



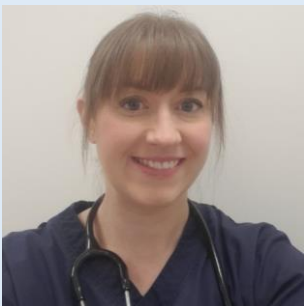
Jenny is a medical oncology registrar at the Clatterbridge Cancer Centre in Liverpool. She attended medical school at the University of St. Andrews completing a BSc in Medical Sciences before completing her medical degree at the University of Manchester. She completed academic foundation training at University Hospitals of Morecambe Bay NHS Foundation Trust before completing core medical training in the Mersey deanery. She took a special interest in oncology and palliative care during training and went on to work at Hospice West Auckland and Hospice North Shore in New Zealand before taking up a post at The Christie NHS Trust in Manchester, prior to starting her oncology training in Liverpool. She has an interest in medical leadership and has completed the Chief registrar programme under the RCP and now is chair of the sub-committee for trainees under the Association of Cancer Physicians.

### Dr Anthony Cunliffe



Anthony Cunliffe has been a GP for 17 years and practices part time in South London. He started working for Macmillan Cancer Support in 2012 as a Macmillan GP Facilitator. He subsequently became a GP Advisor and is now the National Lead Medical Adviser and the Clinical Adviser for London. Anthony is also the joint clinical director for the South East London Cancer Alliance and the Oncology Lead at ORCHA. Anthony has experience of working throughout the cancer pathway having been National Prevention and Diagnosis lead at Macmillan and a GPSI in End of Life Care but his passion is to ensure all people living with cancer receive good quality personalised care.

### Laura Flanagan



Laura currently works as an Advanced Nurse Practitioner at The Christie NHS Foundation Trust which is largest single site comprehensive cancer centre in Europe, treating more than 60,000 patients a year.

Laura has worked as an ANP within Acute Oncology Team, practicing autonomously in the direct clinical management of patients from first presentation at the hospital. Laura has recently specialised to work within the Medical Gynaecology Team and is instrumental and passionate about developing the The Complex and Recurrent Gynaecology Oncology service (CAREGO)

The CAREGO service was developed in 2021 with the aim of streamlining and improving the clinical management and experience of patients with advanced stage gynaecology cancers and Laura proactively manages and coordinates care between hospital and community. Laura also ensures this cohort of patient has rapid access to clinical assessment in outpatient clinics which aims to minimise the need for a hospital admission by working closely with the multi-disciplinary teams in hospital and community.

### Katie Hudson



Senior Lead ACP for Cancer Care at University Hospitals Southampton NHS Foundation Trust, also seconded to the Wessex Cancer Alliance Acute Oncology Project completing a benchmarking review for services across the geographical footprint. 17years experience as a Cancer Nurse with the last 9years specialising in Advanced Practice. Achieved a BSc (Hons) in Cancer Care and more recently an MSc in Advanced Clinical Practice. Member of UKONS and UKAOS and passionate about equity in accessibility for patients diagnosed with cancer.

### Philippa Jones



I currently work independently as an Acute Oncology Nurse Advisor. I am also a founder board member of the UK Acute Oncology Society. This multidisciplinary society aims to promote and support the development of acute oncology services nationally.

I retired from the role of Macmillan Associate Acute Oncology Nurse Advisor in January 2019. Having worked at a national and regional level supporting the development of Acute Oncology Services in the UK. I am a long-standing member of the UK Oncology Nursing Society (UKONS) and was a co-opted board member and Acute Oncology lead.

I led the development of the UKONS 24-hour triage tool for the management of patients contacting Oncology /haematology advice-lines, this is now used widely in the UK and internationally.

As a lead chemotherapy nurse, I recognised a need to improve emergency and unplanned care for cancer patients and applied my previous extensive critical and emergency care experience and knowledge to helping with the development of Acute Oncology Services

### Dr Anna Mullard



Dr AP Mullard MB BCH FRCP (Medical Oncology) UK, PGCert Cancer Studies, Dip Medical Education. Consultant medical oncologist based in North Wales with sub-speciality interests in Acute oncology, Carcinoma of Unknown Primary, Germ Cell tumours, Ovarian Cancer and medical education. Setting up and running services in MUO, AOS and assessment units on a shoe string has taught her that determination and common sense will always win over resource limitation. Her greatest strengths are the team around her and the beauty of North Wales.

### Dr Rebecca Murphy



Rebecca graduated from Sheffield medical school in 2015 and is now an Acute Medical registrar in South Yorkshire. She is currently developing a specialist area of interest in Acute Oncology and is working at Weston Park hospital alongside the team in their Acute Oncology service.

### Dr Melanie Nana

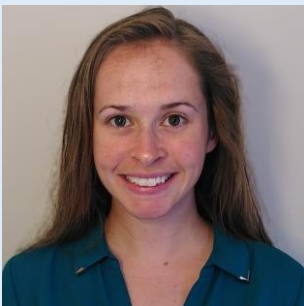
✕ [@Melanie\\_Nana1](#)



Melanie Nana is an obstetric medicine registrar and NIHR clinical research fellow at King's College London. Her undergraduate studies were in Cardiff. In 2020 Melanie moved to London to undertake a clinical fellowship at Guy's and St. Thomas' Hospital Trust during which time she was taught obstetric medicine by Professors Nelson-Piercy and Williamson. She completed the Royal College of Physicians credential in Obstetric Medicine in 2021. She is the current RCP Trainee Committee Co-Chair.

Melanie has several publications related to obstetric medicine including work on hyperemesis gravidarum, antiplatelets in pregnancy and COVID-19 and pregnancy. She has published chapters on COVID-19 in pregnancy in the Oxford Textbook of Medicine and pituitary and adrenal disease in pregnancy in EndoText. She is a co-author of the upcoming European Guideline for Liver Disease and Pregnancy. She designed a breast cancer in pregnancy quick references guide endorsed by the Mummy's Star charity and is now involved in developing an international clinical best practice guideline on this topic.

### Dr Carys Phillips



Carys is an acute medicine trainee in Wales. Her specialist skill during training has been acute oncology, which has led her to participate in revising the RCP acute oncology toolkit. When not in work, she can be found running, cycling or chasing around after her increasingly ambulant baby!

### Laura Spurgeon



Laura is a medical oncology ST4 at The Christie Hospital in Manchester, currently working in gynae oncology. She completed her medical training in Birmingham, qualifying with honours and distinction in 2017, before going on to complete her Academic Foundation Programme in the area. Laura moved to Manchester in 2020 to take up a role at The Christie Hospital and has since been involved in several research projects relating to atypical bronchial carcinoid, non-small cell lung cancer, Advance Care Planning, and more recently, the relationship between the prognostic biomarker, KELIM, and homologous recombination deficiency status in patients with high grade serous ovarian cancer.

During Laura's time on the gynae oncology team, she has had significant exposure to patients with both acute and subacute bowel obstruction and is now very familiar with the short- and long-term management of these complex patients.

### Dr Alison Stockbridge



Dr Alison Stockbridge is a Consultant in Respiratory and General Internal Medicine at New Cross Hospital in Wolverhampton. Alison undertook her undergraduate medical training at Leeds University School of Medicine, following which she completed her postgraduate specialist training throughout the West Midlands deanery. During her training she completed her fellowship in Interventional Pulmonology at Glenfield hospital in Leicester, where she was heavily involved in the lung cancer MDT. She holds specialist interests in pleural medicine, thoracic ultrasound, interventional pulmonology and thoracic oncology.

### Prof Andrew Wardley



[www.linkedin.com/in/andrew-michael-wardley/](https://www.linkedin.com/in/andrew-michael-wardley/)

For those of you who don't know me, I am passionate about improving quality of and access to care for cancer patients. I recognise the need for an integrated system approach to delivering oncology services. I have, throughout my career, engaged closely and openly across all communities and professionals, developing strong collaborations and partnerships enabling improvement in a rapidly evolving cancer care domain. From conceiving, developing, and leading a fully integrated, patient focussed, research centred, holistic breast cancer service directly improving patient care and access to new treatments, from 2001 to implementation of many of these advances into services developments through commissioning initiatives locally and nationally, and contributed to international breast cancer guidelines. Indeed, the nature of cancer requires all aspects of the health system to be actively engaged to achieve desired outcomes and quality. It is important that we work closely to develop relationships with professionals, other than oncologists, involved in the delivery of cancer care. I am committed to leading innovative changes in treatments and redesigning models of cancer care across cancer systems, especially relating to systemic anti-cancer therapies.

Cancer services are in crisis. They were when I started my cancer career in 1993. Medical Oncology is an exciting and rapidly developing area. With the desire and commitment, you can all make an huge difference for your patients and colleagues. The Association of Cancer Physicians is your community. Together we can make a difference.

### Dr Hilary Williams

X @HilaryWMedic



Dr Hilary Williams is Acute Oncology Lead for Wales and Vice President for the RCP in Wales. She is a founder member of the UKAOS society and committed to closer working between acute care and cancer specialists. Most recently Dr Williams has led on development of AOS service specification for Wales to help standardise care and part of the team writing RCP AOS tool kit updated for 2023. Dr Williams is based at Velindre Cancer Centre and works across SE Wales and developed one of the first UK Ambulatory AOS units. She is also involved in understanding the impact of health inequalities in Wales and recently co - authored an open letter to the profession on the continued presence of misogyny in medicine.

### Dr Caroline Wilson



Dr Caroline Wilson started her medical Oncology training at Weston Park Cancer Centre Sheffield in 2007 and completed her PhD in 2014, which focussed on the role of female hormones as influencers of the anti-cancer efficacy of bone targeted agents in early breast cancer. She was appointed Consultant in Medical Oncology at Weston Park in 2015. She specialises in the treatment of breast cancer and has published multiple papers in peer reviewed journals including the Lancet, JCO, The Breast, EJC. She is co-Chief Investigator of the NewDay Trial which is a YCR funded trial investigating a diet and exercise intervention after curative therapy for oestrogen positive breast cancer. She is main/co-app on over £2 million in charitable grants to research the role of diet and exercise after early breast cancer. She supports breast cancer translational and clinical research at Weston Park Hospital, Sheffield as PI on multiple breast cancer clinical trials. She is trust level and Cancer Alliance level lead for acute oncology and Secretary for the UK Acute Oncology Society.

### Dr Kate Young



Dr Kate Young is a Consultant Medical Oncologist at the Royal Marsden Hospital, specialising in Renal and Skin Cancers and is the Unit Lead for the Acute Oncology Service. Kate studied at Cambridge University and completed her clinical training at Imperial, qualifying in 2004. She underwent general medical training in London and specialist training at the Royal Marsden, where she was appointed a consultant in 2020. Kate completed an Md(res.) at the Institute of Cancer Research and her research interests include survivorship and toxicities associated with immunotherapies.