

36th Annual General Meeting of the Association of Cancer Physicians

Monday 6th September 2021
Via Zoom

Programme

New Members

Meetings and Publications

Prizes

Fellowships

Accounts

Burnout and Resilience

Trainees Sub-Committee

UK Chemotherapy Board

New Initiatives

Specialist Advisory Committee

Closer Working with RCR

@acpuk

#ACPAGM21

www.theacp.org.uk

New Members

New Members (1)

Nasreen Melek	Abdul Aziz Akay	Belfast City Hospital
Maise Manar	Al Bakir Almusarhed	St George's University Hospital London
Anneke Gustav	Alves Arias-Pinilla	UCLH
Olubukola Hala Khalid Aziz	Ayodele Aziz	Leicester Royal Infirmary
Alexander Anil	Azizi Babar	University Hospitals Bristol and Weston NHS Foundation Trust
Omer Harriet	Babiker Baker	Sheffield Teaching Hospitals NHS Foundation Trust
David Boh	Ballesteros Boh	University Hospitals of Leicester NHS Trust
Zhuang Mary	Booth Borrill Mather	Royal Marsden Hospital
Grace Subhadeep	Bose Bowen	Cambridge University Hospitals NHS Foundation Trust
Rebecca Fiona	Britton Brown	Queen Elizabeth hospital birmingham
Nicholas Rebecca	Burrell Cafferkey	Castle Hill Hospital
Catherine Nicola	Campbell Cartwright	National Health Service
Douglas Jason	Chow Cliff	GHA
Joanne Claire	Connell Cunningham	Edinburgh Cancer Centre
Niamh Ella	Daniels Dark	Leeds Teaching Hospitals NHS Trust
Graham Aaron	Davis Diamantis	Clatterbridge Cancer Centre
Nikolaos Tze-en	Ding Dumas	NEW CROSS HOSPITAL
Lucy Claire	Dyke Edwards	Royal United Hospitals Bath NHS Foundation Trust
Penelope Lucy	Faulkner Favara	The Christie
David Myria	Galazi Germanou	St Georges Hospital
Elina Styliani Aisha	Ghaus Gregory	Cambridge University Hospitals NHS Foundation Trust
Rebecca Sally	Hall Heywood	St George's Hospital
Richard Sarah	Howlett Ikram	University hospital southampton
Naima Maira	Iqbal Iqbal	Beatson Institute of Cancer Research
S Usaid Chinenye	Iwuji Jackson	St George's Hospital
Nia Hannah	Katifi Kayani	Clatterbridge Cancer Centre
Mahaz Hamzeh	Kayhanian Khakoo	UNIVERSITY OF CAMBRIDGE
Shelize Rehmatullah	Khan Kidd	Royal Marsden Hospital
Andrew Rosalind	Kieran Kuah	Gloucestershire Hospitals NHS Foundation Trust
Chii Yang		Newcastle University
		Torbay Hospital
		Barts Health NHS Trust
		Edinburgh Cancer Centre
		Royal Marsden NHS Foundation Trust
		University Hospital Bristol
		Royal Marsden NHS trust
		University Hospitals Leicester
		Cambridge University Hospital NHS Foundation Trust
		St Bartholomew's Hospital
		Guys Hospital
		NHS GGC
		Northern Ireland Cancer Centre
		Northern Centre for Cancer Care
		Leeds Cancer Centre, St James' Hospital
		North Middlesex Hospital
		Royal Stoke University Hospital
		UHCW
		University Hospital Birmingham NHS Foundation Trust
		Leicester Royal Infirmary
		South West Wales Cancer Centre
		Churchill Hospital
		Leeds Teaching Hospitals
		UCL Cancer Institute
		Royal Marsden Hospital
		University Hospitals Birmingham
		South West Wales Cancer Centre
		Addenbrookes hospital
		Imperial College Healthcare NHS Trust

@acpuk

#ACPAGM21

www.theacp.org.uk

New Members

New Members (2)



Jie	Lam	University College Hospitals NHS Foundation Trust
Martin	Little	The Churchill Hospital
Tarunan	Loganathan	Royal Marsden Hospital
Reem	Mahmood	Bradford Teaching Hospitals NHS Foundation Trust
Sonia	Mansukhani	Royal Marsden
Alexandra	Marsh	Leeds Teaching Hospitals
Cecilia	McCormick	Addenbrooke's Hospital, Cambridge
Adam	McGeoch	Hinchingbrooke Hospital NWAFT
Alistair	McLaren	Beatson West of Scotland Cancer Centre
Vasiliki	Michalarea	Guy's and St. Thomas' NHS Foundation Trust
Ali Abdulnabi	Mohamed	Royal Marsden Hospital
Uma	Mukherjee	Barts Hospital
Leena	Mukherjee	Beatson West of Scotland Cancer Centre
Ravindhi	Murphy	Imperial
Bence	Nagy	The Christie NHS Foundation Trust
Elizabeth	Nally	St Bartholomew's Hospital
Tamsin	Nash	Greater Glasgow & Clyde
Gregory	Naylor	Beatson West of Scotland Cancer Centre
Daniel	Netto	Royal Preston Hospital
Muhammad	Niazi	Velindre Cancer centre
Conor	O'Neill	NICC
Alexandra	Ostler	The Royal marsden hospital
Carina	Owen	University Hospitals Bristol and Weston NHS Foundation Trust
Grisma	Patel	London Deanery - Guys/St Georges
Jessica	Pearce	University of Leeds
Ashley	Phelly	NHS
Rachel	Prichard	Northern Centre for Cancer Care
Aitzaz	Qaisar	Beatson West of Scotland Cancer Centre
Dulani	Ranatunge	Hull University Teaching Hospital NHS Trust
Ankit	Rao	Nottingham University Hospital NHS Trust
Marika	Reinius	Addenbrooke's Hospital, Cambridge
Simon	Rodney	The Royal Marsden
Maria	Rohan	Cheltenham General Hospital
Megan	Rowley	Queen Alexandra Hospital
Debashree	Roy	University Hospitals of Leicester
Kelly	Rust	Edinburgh Cancer Centre
Mohamed	Salama	The Royal Wolverhampton NHS Trust
Amit	Samani	Imperial College Healthcare NHS Foundation Trust
Ahmed	Shaheen	Swansea Bay University Health Board
Simon	Shamas	Queen's Oncology Centre (Yorkshire Deanery)
Hala Elnagi Jadelseed	Shareef	NHS Tayside
Scott	Shepherd	The Royal Marsden NHS Foundation Trust
Jiaqi	Shi	NHS
Allie	Shipp	Velindre Cancer Centre
Rohan	Shotton	The Christie NHS Foundation Trust
Catherine	Siller	Harrogate and District NHS Foundation Trust
Susanna	Slater	Imperial College Healthcare NHS Trust
Christopher Chen Tsu	Sng	Barts Health NHS Trust
Sugeeta	Sukumar	Mount Vernon Cancer Centre
Abu Saleh Md	Taher	St George's Hospital London
Pei Jing	Teo	University Hospital Birmingham
Nadza	Tokaca	Royal Marsden Hospital
Jaya	Vangara	Ysbyty Gwynedd
Jamie	Weaver	The Christie NHS FT
Mark	White	Beatson West of Scotland Cancer Centre
Sophie	Williams	University of Sheffield/Sheffield Teaching Hospitals
Emma	Winn	Northern centre for cancer care
Helen	Winter	Bristol Cancer Institute
Yien Ning Sophia	Wong	UCL
Dorothy	Yang	Royal Surrey County Hospital

@acpuk

#ACPAGM21

www.theacp.org.uk

New Members

But.....

The ACP relies on membership
subscriptions to support its work.

Please encourage colleagues to join, or
in the case of “lapsed” members, to re-
join

Details on the ACP website [here](#)

@acpuk

#ACPAGM21

www.theacp.org.uk

ACP Regional Representatives

The ACP has an established network of regional representatives whose role is to help raise the profile and encourage membership of the ACP, and aid communication between the consultants within their region and the ACP Executive Committee and vice versa.

Please engage with your regional rep:

Professor Andrew Protheroe	South East Coast, Thames Valley
Dr Graham Dark	North East
Dr Tom Waddell	North West
Dr Caroline Archer	Wessex
Dr Tania Tillett	South West
Dr Rachel Jones	Wales
Dr Caroline Michie	Scotland
<i>Vacancy</i>	Northern Ireland
Professor Samreen Ahmed	East Midlands
Dr Danish Mazhar	East of England
Dr Pauline Leonard	London
Dr Lena Karapanagiotou	London
Dr Vanessa Potter	Cheshire and Mersey & West Midlands
Dr Alison Young	Yorkshire and the Humber

@acpuk

#ACPAGM21

www.theacp.org.uk

Meetings and Publications

September 2019 – Workshop on Future of Acute Oncology

RCR/RCP/ACP joint [publication](#) in Oct 2020

October 2019 – Workshop on Cancer and Fertility

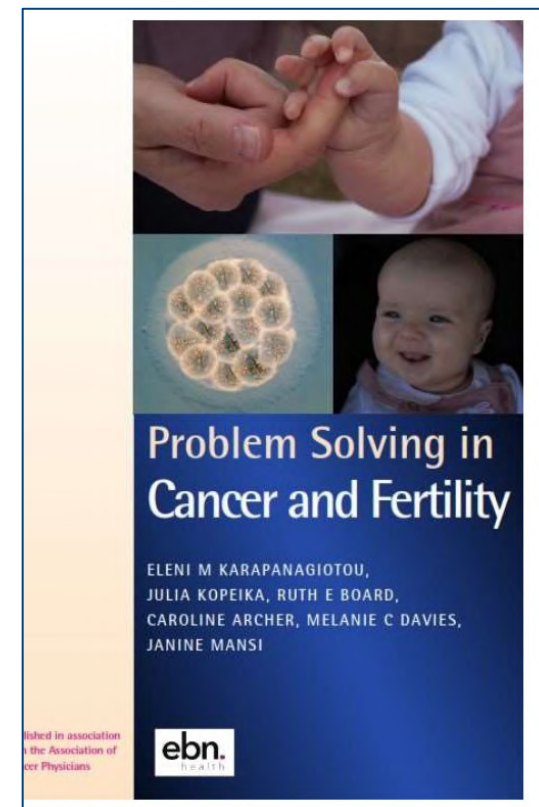
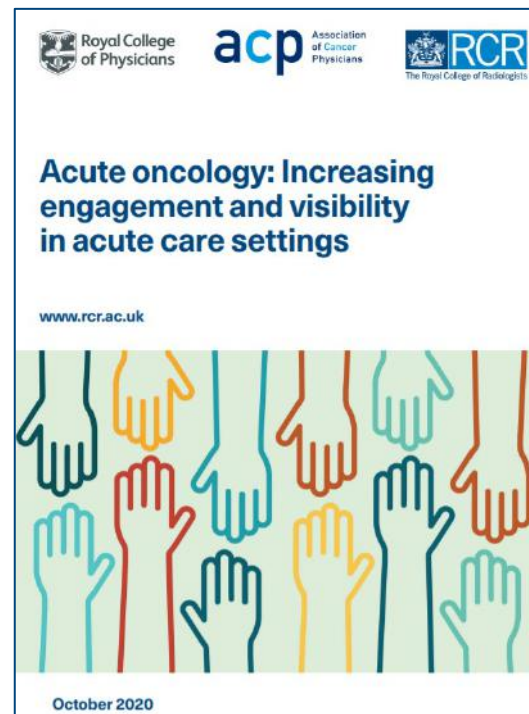
Published by EBN Health in 2020

16th October 2021 – [Workshop on Interventional Oncology](#)

Collaboration with the British Society for Interventional

Radiology, Chaired by Prof Tze Wah

For publication in 2022



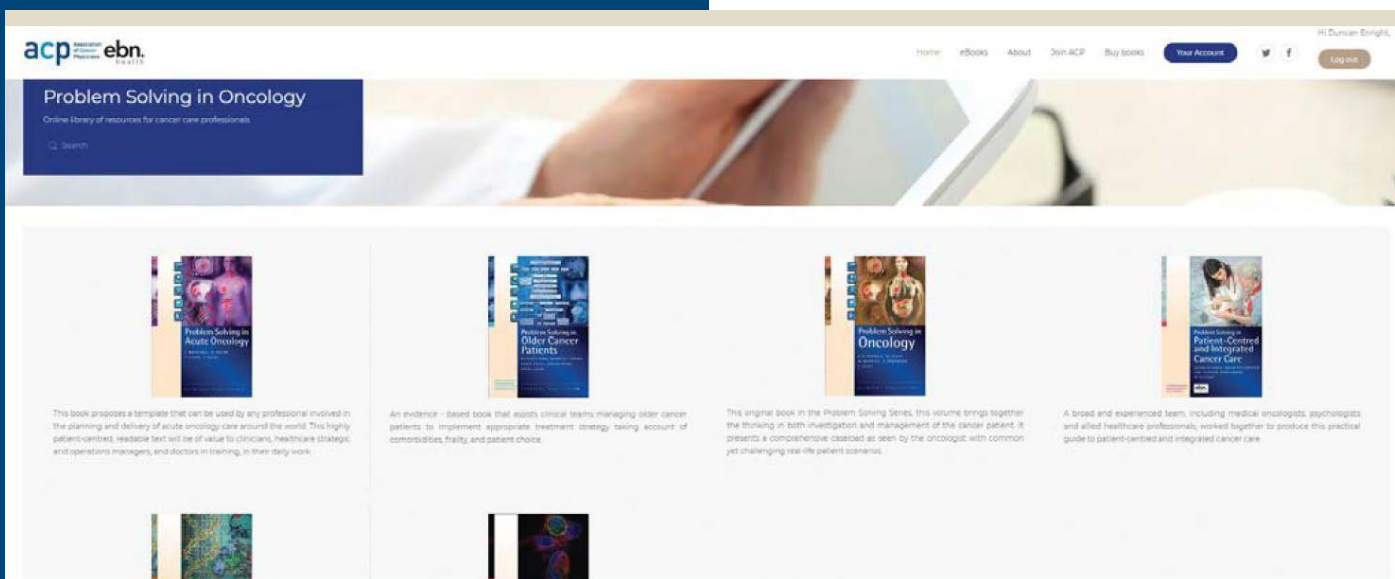
@acpuk

#ACPAGM21

www.theacp.org.uk

ONLINE PUBLICATION PLATFORM LAUNCHED 2020

New online platform from EBN Health. All ACP titles, including webinar recordings, available to members. Fully searchable and downloadable



ACP Library User Guide

<https://acplibrary.ebnhealth.com>

ebn.
health

Introduction



Prizes

McElwain and President's Prizes

Annual competition for trainees for clinical or basic research. Prize £1000 + free registration at NCRI meeting with presentation at both the NCRI Festival and trainees weekend

2021 Winners:

McElwain Prize (clinical)

James Clark

The effect of clinical decision-making for starting systemic anti-cancer treatments in response to the coronavirus pandemic in England: A Retrospective Analysis

President's Prize

Carina Owen

Delayed immune-related adverse events (irAE) with anti-PD1-based immunotherapy in melanoma, and
Management of early melanoma recurrence despite adjuvant anti-PD1-antibody therapy

McElwain Prize (translational)

Sophia Wong

Identification of urine derived lymphocytes as a non-invasive measure of the tumour immune microenvironment in bladder cancer

@acpuk

#ACPAGM21

www.theacp.org.uk

Fellowships

FACP(UK)

ACP has established Fellowships: FACP (UK)

Fellows are distinguished contributors to medical oncology or to another aspect of cancer science, cancer healthcare, strategy or planning and act as senior advisers to, and ambassadors for, the ACP

Two categories – Fellows and Honorary Fellows

Nominations reviewed and approved by ACP Executive

21 awards in 2021 – to be announced shortly

@acpuk

#ACPAGM21

www.theacp.org.uk

Accounts and Management

Treasury Report:

2019 Annual Report and accounts submitted to Charity Commission. Full financial report [here](#). 2020 Accounts being finalised by accountants

Board of Trustees

Board of Trustees established (led by Alison Jones and Richard Begent)

Association Management

Association management, including membership database and collection of annual subs, undertaken by SAS – please respond to requests for information and annual payment (and reminders)

Future Plans

Plans to increase secretariat support

@acpuk

#ACPAGM21

www.theacp.org.uk

Well-being, Burnout and Resilience

Oncology is a rewarding profession but caring for patients with cancer can also be demanding and stressful.

ESMO survey in European young oncologists: **>70%** showed signs of burnout. Similar data for the US. Implications for already stretched workforce.



@acpuk

#ACPAGM21

www.theacp.org.uk

Well-being, Burnout and Resilience

Well-being since COVID-19

Susie Banerjee (Royal Marsden) leads **ESMO Resilience Taskforce** to look at measures and interventions to help prevent and tackle burnout and is a member of the ACP Exec.

...further updates in ESMO Congress 2021!

ORIGINAL RESEARCH

The impact of COVID-19 on oncology professionals: results of the ESMO Resilience Task Force survey collaboration

S. Banerjee^{1,2*}, K. H. J. Lim^{3,4}, K. Murali⁵, K. Kamposioras³, K. Punie⁶, C. Oing⁷, M. O'Connor⁸, E. Thorne⁹, B. Devnani¹⁰, M. Lambertini^{11,12}, C. B. Westphalen¹³, P. Garrido¹⁴, T. Amaral^{15,16}, G. Morgan¹⁷, J. B. A. G. Haanen¹⁸ & C. Hardy⁹

ORIGINAL ARTICLE

The concerns of oncology professionals during the COVID-19 pandemic: results from the ESMO Resilience Task Force survey II

K. H. J. Lim^{1,2,3}, K. Murali⁴, K. Kamposioras¹, K. Punie⁵, C. Oing⁶, M. O'Connor⁷, E. Thorne⁸, T. Amaral^{9,10}, P. Garrido¹¹, M. Lambertini^{12,13}, B. Devnani¹⁴, C. B. Westphalen¹⁵, G. Morgan¹⁶, J. B. A. G. Haanen¹⁷, C. Hardy⁸ & S. Banerjee^{18,19*}



COVID-NOW UK study to report soon.

Materials to support individual and organisational solutions to be available on ACP website.

@acpuk
#ACPAGM21
www.theacp.org.uk

ACP Trainees Committee

Sub-committee of the executive committee

Daniel Hughes (Chair)

Mark Baxter (left 2021)

Alison Berner

Rachel Broadbent

Jenny Cotton

Helen Hockings

Laura Feeney

Joni Howells (joined 2021)

Adam Januszewski (left 2021)

Hamzeh Kayhanian

Jonathan Lim

Jemma Longley

Leena Mukherjee (left 2021)

Anna Olsson-Brown

Ashley Pheely (joined 2021)

Nicola Thompson



@acpuk

#ACPAGM21

www.theacp.org.uk

ACP Trainees Committee

Recent activities and achievements

- Launch of very successful monthly teaching webinars in October 2020, recorded and published on EBN platform. Mainly tumour-specific topics, but also sessions on the new curriculum and acute oncology (joint with RCR)
- Development of SCE revision/practice question book, for publication in June 2022. Excellent engagement from many consultants and senior trainees as question writers. Led by Dan Hughes and Anna Olsson-Brown with consultant editorial oversight. Deadline for submission of questions Nov 2021
- Closer collaboration with ESMO, with establishment of network of ACP and ESMO regional “ambassadors”
- New dedicated trainee resources page set up on ACP website
- F2F trainee weekend 16th-17th October

@acpuk

#ACPAGM21

www.theacp.org.uk

UK Chemotherapy Board (UKCB) – Represented by Janine Mansi and Ruth Board

UKCB website - <https://www.ukchemotherapyboard.org/>

UK Chemotherapy Board Conference, 25th November, London - Annual conference led and hosted by the UKCB <http://www.commissioningcancer.co.uk/>

Pinkie Chambers/Netty Cracknell (BOPA) currently joint Chairs of the UKCB

New initiatives:

- Hepatitis B testing – position statement
- National library of SACT protocols
- Safety of e-prescribing

Recent guidance: 2020-2021

- [DPD testing policy](#) in liaison with NHSE Genomics
- Outpatient mx of glycaemic control
- Low risk neutropenic sepsis pathway in liaison with AO

Ongoing work and previous guidance:

- Medically related osteonecrosis of the jaw (MRONJ) [guidance](#)
- Chemotherapy [e training modules](#) have been fully supported by the UKCB
- [Immunotherapy](#) – best practice – led/supported by Ruth Board
- Patient held chemotherapy diaries – updated version. Supported by [CRUK](#)
- National regimen-specific consent forms – on [CRUK website](#)
- ACP/UKCB support for a UKONS RAG triage tool for acute oncology emergencies: <http://www.ukons.org/acute-oncology-forum>

Ongoing liaisons:

- CRG
- SACT PHE

@acpuk
#ACPAGM21

www.theacp.org.uk

New initiatives

Collaboration with OncologyEducation

The ACP hosted the first licensed Best of ASCO® Event in the UK, over 500 registered, 250 joining the live broadcast on 5th July



The livestreaming cross-tumour event will summarise the most significant treatment advances presented at the 2021 ASCO Meeting.

Chaired by Professors David Cunningham and Samreen Ahmed, panelists will provide a comprehensive overview of ASCO 2021 including plenaries and breakout sessions by tumour site, focused on key disease sites most relevant to UK oncologists.

Plans for 2022 (tbc):

- Best of SABCS - End of January
- Best of GU/GI - April
- Best of ASCO – June/July
- Best of Precision Oncology – Autumn 2022

@acpuk

#ACPAGM21

www.theacp.org.uk

SAC – Specialist Advisory Committee

‘Specialty Sub-committee of the Joint Royal College of Physicians Training Board’

Contribute to the development of specialist training policy and
supervise the deliver of training to standards set by JRCPTB

Chair – Dr Jackie Newby (Royal Free)

@acpuk

#ACPAGM21

www.theacp.org.uk

SAC Update

Dr Jackie Newby

Chair

Medical Oncology Specialty Advisory Committee

JRCPTB

New Curriculum: Background

- ▶ 2 major drivers for Curriculum Revision
 - ▶ Shape of Training (ShoT) Review
 - ▶ GMC new standards for postgraduate medical education
- ▶ Impact on Medical Oncology
 - ▶ Move to shift balance to generalism from specialism one of the key ShoT principles
 - ▶ Medical speciality within RCP
 - ▶ Dual training/accreditation with internal medicine 'Group 1 vs Group 2' specialties
 - ▶ Greater flexibility to adapt to population and trainee needs
 - ▶ Pressure to work more closely with Clinical Oncology

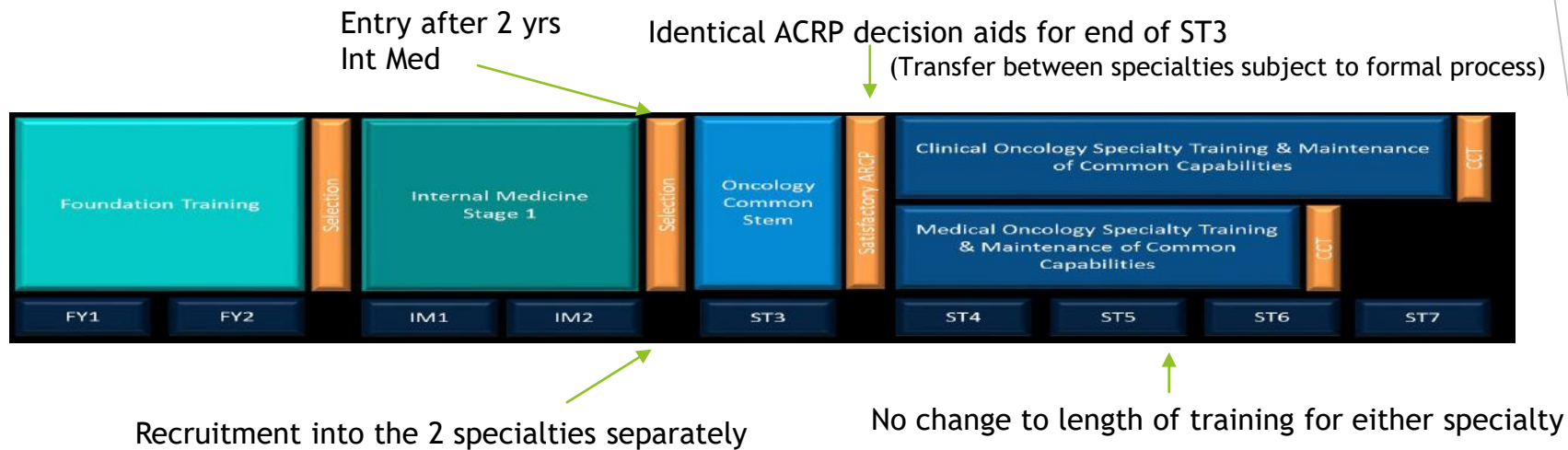
Curriculum Development 2017-2021

- ▶ 2017- told we were to be Group 1 (dual accrediting with internal medicine) and that there was to be 2 years of joint training with Clinical Oncology as a first step
- ▶ 2017-2019 Negotiations
 - ▶ Group 2 (ie not dual training/accreditation with general medicine)
 - ▶ Predicated on demonstrating commitment to more comprehensive Acute Oncology Services
 - ▶ 1 year joint training with Clinical Oncology
 - ▶ Closer alignment of curricula across shared domains throughout training
- ▶ 2018-2020 Revision
 - ▶ New GMC standards for curricula
 - ▶ High-level Outcomes based
 - ▶ Holistic performance assessment
 - ▶ Greater transferability/flexibility
 - ▶ Details of the joint training/ curriculum alignment
 - ▶ Substantiating the Acute Oncology element
- ▶ 2020-2021 Preparing for Implementation/COVID

Curriculum implementation

- ▶ New Medical Oncology Curriculum implemented 1st August 2021
 - ▶ Curriculum and guidance on JRCPTB website under 'Specialties-Medical Oncology'
 - ▶ Any new ST3
 - ▶ Anyone >12m WTE from CCT will transition
 - ▶ Gap analysis/transition forms and advice available on eportfolio

Training Pathway



Key elements of new curriculum

- ▶ Dividing the high-level learning outcomes (known as capabilities in practice, or CiPs) of the curricula into 3 groups:
 - ▶ Generic (common to all specialties);
 - ▶ Shared/Common Oncology (same for Medical and Clinical Oncology) and
 - ▶ Medical or Clinical Oncology specific (unique to specialty)
- ▶ Complete alignment of the ARCP decision aids for the end of the ST3 Oncology Common Stem year to facilitate transfer between the specialties
- ▶ Alignment of the shared learning outcome areas of the curricula throughout training
- ▶ An explicit commitment to training in Acute Oncology for all trainees

Curriculum: the future

- ▶ Approval of the 2021 curriculum came with caveats
- ▶ ‘Working with colleagues at the Royal College of Radiologists, please monitor the effectiveness and deliverability of the OCS, including the variation in CiP assessment scales, and assess the opportunity for greater commonality between the two training pathways. Please report back following completion of the first year in 2022’
- ▶ Joint Curriculum working group convened 2018
 - ▶ Unofficial group; admin support from RCR; no formal status
 - ▶ Worked very effectively on agreeing the joint elements of the curriculum and aligning the curricula/getting approvals
 - ▶ Has drifted with COVID so implementation has been less coordinated
 - ▶ Need to re-establish to ensure that we are monitoring the implementation of the Common Stem Year and in a position to report back to GMC in autumn 2022
- ▶ Acute Oncology
 - ▶ Sept 2019 Joint ACP/RCR workshop ‘The future of Acute Oncology’
 - ▶ Oct 2020: ‘Acute Oncology: increasing engagement and visibility in acute care settings’ Joint ACP/RCP/RCR publication
- ▶ Closer working between Medical and Clinical Oncology- covered in more detail elsewhere in this meeting

Workforce

- ▶ Major boost to training numbers in England and Wales
 - ▶ 35 new Med Onc numbers for England allocated from Treasury spending review 2020/21
 - ▶ Geographical distribution decided by HEE based on their data analysis
 - ▶ London excluded
 - ▶ Spending Review was downgraded to single rather than 5 year due to COVID- plan to ask that this continues for at least the next 4 years as per original plans
 - ▶ Wales went through similar process and extra posts allocated this and for next 4 years
 - ▶ Scotland/NI separate negotiations
- ▶ National Recruitment 2021
 - ▶ Managed to include these new numbers
 - ▶ Filled all available numbered posts
 - ▶ Big thank you, as always, to the many of you who contributed to the recruitment process
- ▶ HEE Workforce Group
 - ▶ SAC represented by James Larkin (SAC co-chair)
 - ▶ Looking at broader issues
 - ▶ Current focus on how to support/maximise the potential for utilising skill mix in cancer treatment provision

Closer Working Group (CWG) Update: ACP AGM

ACP members: Samreen Ahmed, David Cunningham, Dan Hughes, Peter Johnson, Jackie Newby, Peter Selby with equal numbers of CO members and also RCR and RCPs members.

- Previous Working Party recommended that the most feasible and effective solution would be a new joint Faculty including the two separate specialties of Medical Oncology and Clinical Oncology hosted in a single Host Royal College, together with the eventual opening of the ACP to members from CO and MO, thus creating a shared learned society.
- Supported by the Clinical Oncology Faculty Board and the ACP Executive Committee and by surveys of ACP and RCP/MO
- CWG job is to find an acceptable way of delivering this vision.
- Decisions will lie with the Members of CO and MO but we want and need to take the RCR and RCP with us
- **CWG has not yet finalised its report—so everything today is consultation and discussion.**

Starting from different places

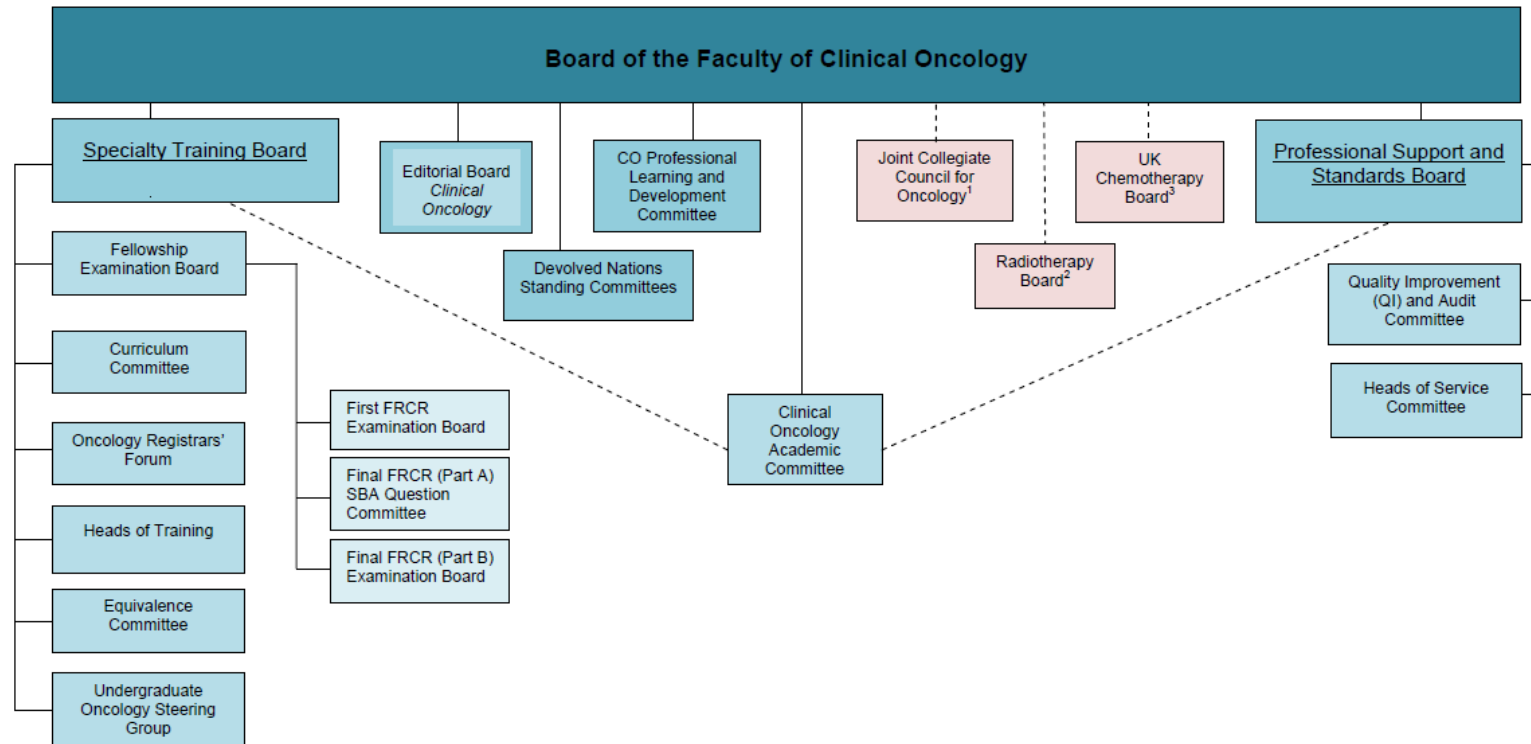
Clinical Oncology: 880 consultants

- Arose from radiation oncology
- Faculty within RCR with comprehensive support funded by RCR subscriptions
- One of two Faculties in RCR with equal leadership and governance roles
- Service-oriented with increasing research focus
- 5 years SPR training post-MRCP
- Exit exam: FRCR
- Increasing use of systemic anti-cancer treatments
- Acute Oncology but no acute unselected take

Medical Oncology: 560 consultants

- Arose from internal medicine
- Specialty within RCP's; comprehensive general medical support funded by subscriptions
- More research-focused
- 4 years SPR training post-MRCP
- JRCPTB oversees training
- Exit exam: SCE via MRCP(UK)
- Exclusive focus on systemic treatments, many experimental/novel
- ACP provides oncology support from additional subscriptions.
- Group 2 specialty for acute unselected take

RCR support for Oncology



RCR boards and committees

Partnership boards (see notes 1-3)

September 2020

¹ established jointly between the Royal College of Physicians of London and The Royal College of Radiologists

² established jointly between The Royal College of Radiologists, the Society and College of Radiographers and the Institute of Physics and Engineering in Medicine

³ established jointly between The Royal College of Radiologists, the Royal College of Physicians, the Association of Cancer Physicians, the Royal College of Pathologists, the British Oncology Pharmacy Association and the UK Oncology Nursing Society

Closer Working Group Update: *DRAFT*

- The CWG draft report analyses and tabulates all aspects of the current system in detail and proposes a new joint Faculty with enough detail to allow colleagues to make judgements
- The CWG draft report makes seven specific recommendations covering Host College, a naming consultation, governance, leadership, fellowships and voting rights, support and infrastructure, training and accreditation.
- The draft report key content is supported by the Executive Committee of the ACP and the Clinical Oncology Faculty Board of the RCR

Closer Working Group Update: *DRAFT*

- The new joint Faculty would replace the existing RCR Faculty of Clinical Oncology with minimal disruption and sustain the strong support given to oncology by the RCR,
- Equal input to leadership, governance and infrastructural support for MO and CO.
- MO and the ACP have emphasised their wish to seek agreement with the Royal Colleges of Physicians (RCPs) about changes and future relationships.
- RCPL senior officers have agreed that if an option for the RCR as the Host College is developed with clarity and sufficient detail by the CWG and is then put to a survey of MO Members and Fellows and supported by a majority, then they will agree to that option being considered by the RCPs.
- The draft CWG paper will be finalised in meetings in October 2021, and a final version will then be the basis for a further comprehensive survey and vote of both MO and CO Members and Fellows including trainees.

Why would Medical Oncology take such a decision ?

Not surprisingly evidence suggests each specialty so far favours its existing parent college for the Host of the new joint Faculty. So if this change is to happen, one side must compromise. The practical advantages of the RCR as Host leads to the draft recommendation for Medical Oncology to make the compromise.

- **The single joint Faculty will have a strong and influential voice which will help to improve cancer services and patient outcomes.**
- **The pressure from the GMC and others for closer working will be managed effectively**
- **The two specialities will deliver Acute Oncology (not acute medical take)**
- **The RCR provides an outstanding level of oncology leadership , governance and infrastructure from College subscriptions—the Faculty is up and running , has equal inputs and would be shared equally between MO and CO.**

Next steps: 2021

ACP AGM	6th September
ACP Trainees	13th September
Discussion with RCP Registrar	21st September
Discussion with RCR President	24th September
CWG	21st October
CWG	27th October

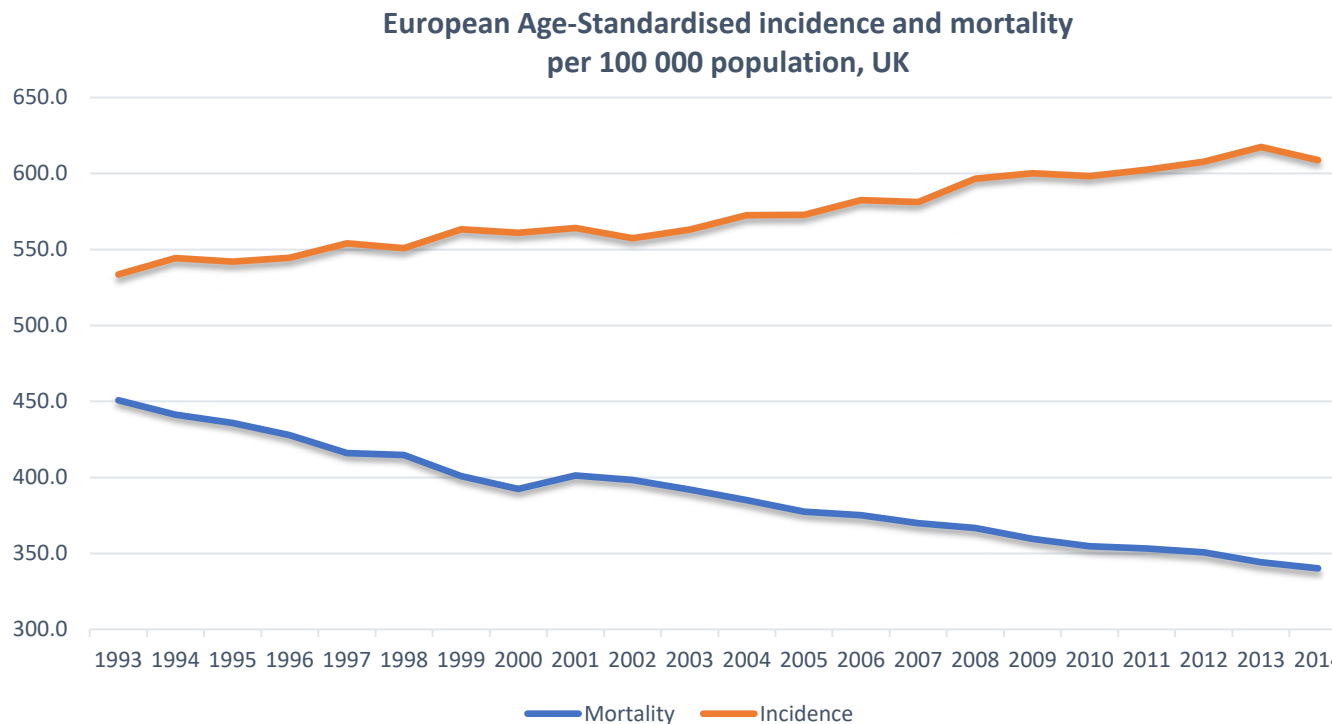
Finalise CWG report and recommendations.

Survey and Vote all medical oncologists, including trainees

Result of vote in 2021.

Medical and Clinical Oncology

Closer working and plans for a new single faculty



Source: cruk.org/cancerstats

Modern Approach to delivering Oncology

- Increasing emphasis on cancer-specific rather than treatment modality-specific expertise
- Increasingly harmonious multispecialty working in practice
 - Joint working in clinics, acute oncology services, research and development
- Emphasis on common training in early years: oncology common stem
- **External incentives:**
 - Shared aims in quality assurance and improvement: **improving outcomes** to match those of comparable countries
 - Need for **effective professional advocacy** on improving cancer outcomes to NHS/government
 - Need to make common cause for **workforce expansion**
 - Need to improve **skill mix and productivity**
 - Need for **effective collaboration** with other professional groups
 - Need to work together to deliver Acute Oncology **as our contribution to NHS acute services** (GMC Curriculum Oversight Group, Shape of Training)

Options explored for closer working

- Status quo: Joint Collegiate Council for Oncology.
 - Not decision-making, not influential
 - Does not respond to training expectations at GMC
- Joint Intercollegiate Faculty
 - Complex relationships between colleges
- **Single autonomous Faculty**
 - **Effective vehicle for joint working, but needs one host college**
 - **Preferred solution of RCR Faculty Board and ACP Executive Committee**
- Separate College of Oncology
 - Substantial logistic and fiscal challenges

Key consideration: Maintain cancer-focused support and infrastructure enjoyed by colleagues in RCR

Areas where joint working is desirable

- Education, training, CPD
 - Undergraduate education
 - Specialty recruitment
 - Curriculum development and oversight
 - Shared training in cancer biology and medicine
 - Assessment of progress, competency
 - New consultant support
 - Access to learning
 - Publications
- Clinical and academic practice
 - Protocols and guidelines
 - Support to colleagues
 - National audit/quality improvement
 - Academic meetings and research planning
- Strategy and policy
 - Policy development
 - Political access/influence
 - National cancer strategies
 - Academic strategies
 - Workforce planning

1. Summary of Recommendations

Recommendation 1. *The CWG recommends that the new joint single Faculty for CO and MO should be hosted in the RCR. Faculty of Clinical Oncology and the RCP/ACP based components for MO will become the new Faculty – with the possible but demanding target for gaining agreements to form the new Faculty and initiating the process of change in the first half of 2022.*

Recommendation 2. *The CWG recommends that there should be a survey of preferences for the name of the new Faculty among all CO and MO including trainees.*

Recommendation 3. *The Governance arrangements for oncology in the RCR should be sustained as at present with the continuation of roles and positions on the main bodies, except that positions will be shared between CO and MO. Most New Faculty committees will have chairs and vice chairs (one CO; one MO: rotating). Some (probably only 2) additional committees to cover the specific needs to the two specialties will be needed.*

Recommendation 4. *The leadership for the new joint Faculty will be similar to that of the existing RCR Faculty of Clinical Oncology, including roles and positions on RCR Council and Senior Leadership Team. They will be equitably shared between CO and MO with appropriate rotations and the addition of Chair /Vice Chair roles at major leadership positions.*

Recommendation 5. *Both CO and MO should have appropriate post-nominal letters and the same rights within the RCR and new Faculty.*

Recommendation 6. *The support for the new Faculty should encompass the needs of CO and MO and modest likely increases in staff should be resourced from additional income from MO membership and activity in the RCR. The ACP should have its home within the RCR and there may well be efficiencies from shared support, but any additional resources should come from ACP income.*

Recommendation 7. *A new combined training oversight board should be formed as soon as the new Faculty is formed. Training arrangements will remain unchanged for a limited transition period of 2/3 years. After that, new MO trainees will join the RCR and current trainees may transfer to the RCR, but should be given the option of completing their training in the RCPs.*

Questions